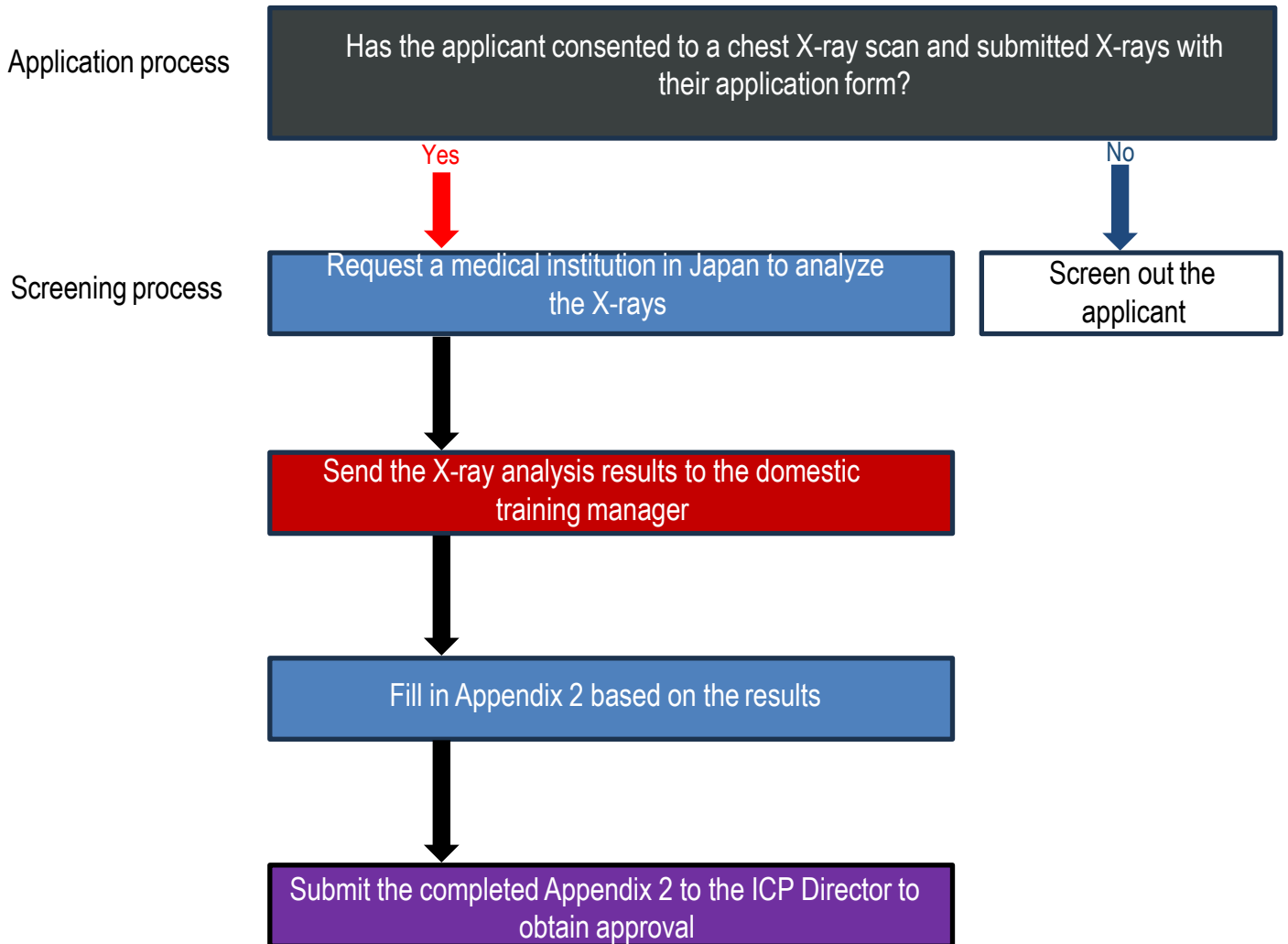


## Medical Examination Flowchart 1-A. Chest X-ray Examination (X-ray analysis by medical institutions in Japan)

Ver. Feb2018



Local training manager



Domestic training manager  
(Course Leader)



Medical institution in Japan



Training administrator



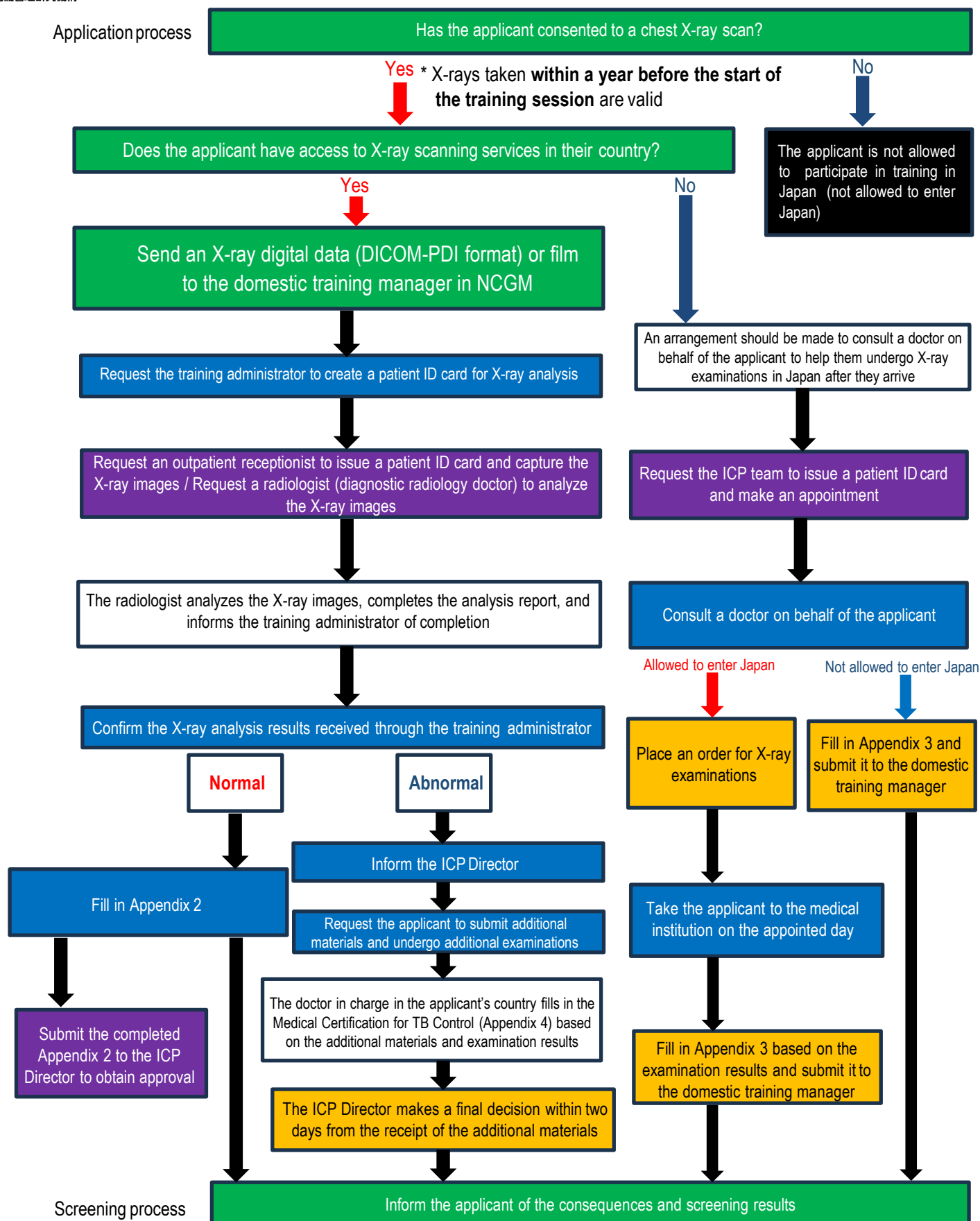
**JIHS**

国立健康危機管理研究機構

## Medical Examination Flowchart 1-B. Chest X-ray Examination (X-ray analysis by NCGM radiologists)

Ver. May 2024

Application process



Local training manager



Domestic training manager (Course Leader)



DCC doctor in charge

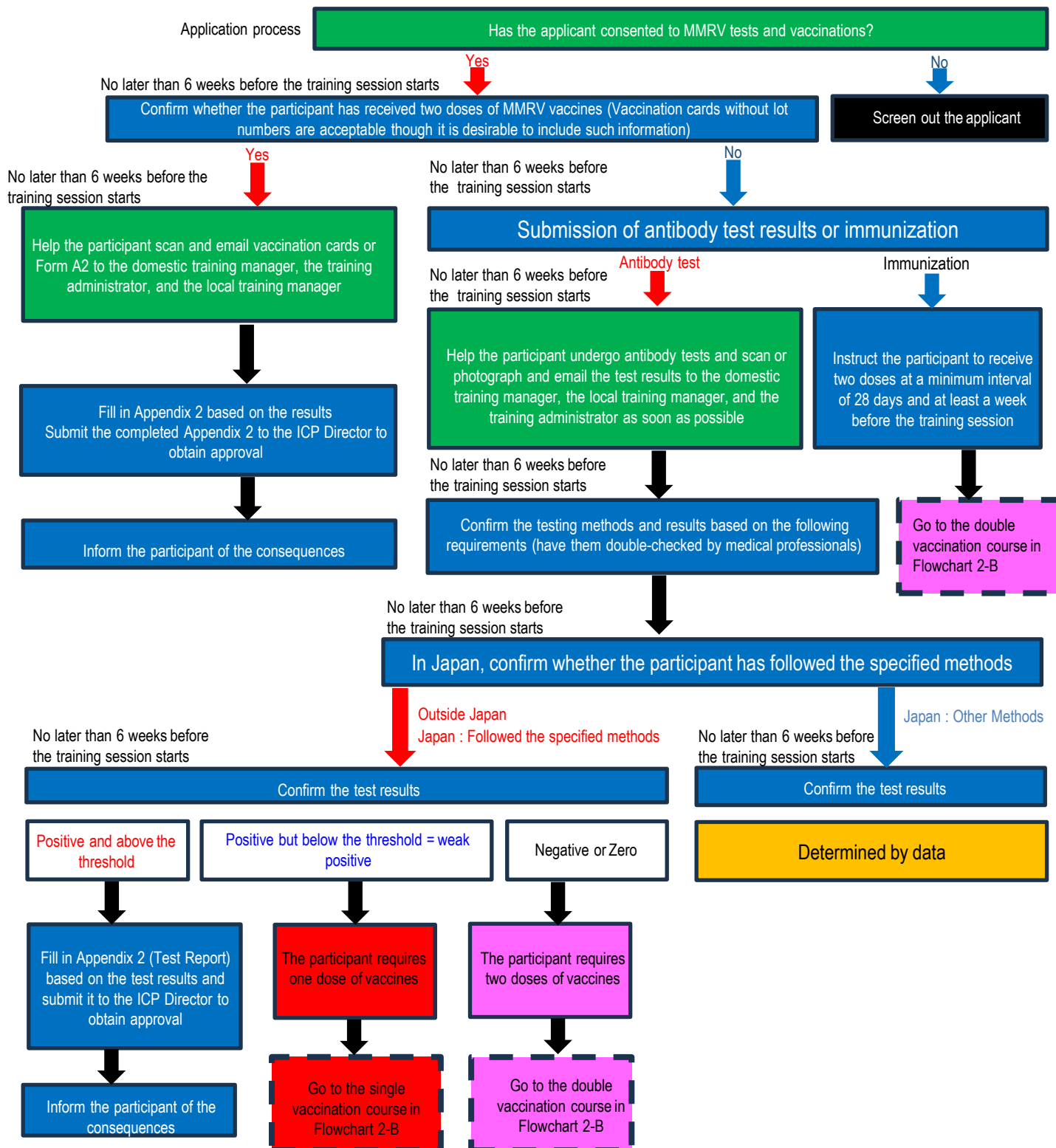


Training administrator

# Medical Examination Flowchart 2-A. Measles, Mumps, Rubella, and Varicella (MMRV)

Ver. May 2025

The domestic training manager should directly communicate with participants via email (and send CCs to the local training managers). If the domestic training manager has difficulty communicating with some participants, institutional support should be provided to facilitate communication through the local training managers in their countries.



## Medical Examination Flowchart 2-B. Measles, Mumps, Rubella, and Varicella (MMRV)

Ver. Feb 2018

